

Careers in Buckinghamshire

LOCAL LABOUR MARKET INFORMATION FOR STUDENTS,
SCHOOLS, PARENTS AND BUSINESSES



Buckinghamshire
LOCAL ENTERPRISE
PARTNERSHIP
THE ENTREPRENEURIAL HEART OF BRITAIN



**YOUR LOCAL
GROWTH HUB**

**THE CAREERS &
ENTERPRISE
COMPANY**



 **HM Government**





INTRODUCTION

Welcome to the Careers in Buckinghamshire Information Guide - full of local Labour Market Information to help with your future career.

Here, you will find information on growing sectors in our area, job roles that are in demand, skills you need to thrive in employment and a whole host of other useful information to ensure you are successful in your career.

Buckinghamshire is home to many innovative, creative and steadfast businesses as well as top - notch training providers.

The information provided in this booklet can be used by students, graduates, parents, schools and those seeking information on a career or sector as well as in conjunction with the new Bucks Skills Hub website, found at:

www.bucksskillshub.org



CONTENTS

The World of Work	2
The Local Picture in Buckinghamshire	3
Construction Sector	5
Health and Life Sciences Sector	6
High Performance Engineering Sector	7
Digital Technology Sector	8
Space Sector	9
Creative Sector	10
Manufacturing Sector	11
Financial and Professional Services Sector	12
Wholesale and Retail Sector	13
Education Sector	14
Hospitality, Leisure and Tourism Sector	15
Public Sector	16
Third and Voluntary Sectors	17
Buckinghamshire Enterprise Zones	18
Qualifications and Pathways	20
Skills for Employment	21

WHAT IS LMI ?

LMI stands for 'Labour Market Information'.

It can tell us the following:

- ▶ Industries and jobs which are growing or declining
- ▶ Certain jobs or skills that employers are looking for
- ▶ Salaries of different jobs
- ▶ The number of employees in different jobs
- ▶ Trends in employment jobs and industries.



Careers in Buckinghamshire

WHAT DO WE KNOW?

As the world changes and grows, so does the world of work and the Labour Market. What we know now is that compared with the Baby Boomers and Gen X, Millennials, Gen Z and Gen Alpha have and will approach their careers differently. For example, the latter are more likely to have many jobs over their lifetime and use an array of skills they have developed to progress into different roles and careers, unlike the former who typically stayed loyal to one or two companies and stuck to one or two careers in their lifetime. The latter generations have and will weave career breaks, formal education and work over a longer life period than the former who typically followed a lifespan that led from education, to work, to retirement. In order to compete with international markets, the majority of jobs now and in the future require at least Level 2 and 3 qualifications - with a third asking for Level 6+ qualifications. Employers are increasingly looking for higher level technical skills, often at levels 4 and 5.



Check out our handy guide to Qualification Levels on page 19!

HOW IS THE WORLD OF WORK CHANGING?

There are many ways the world of work has changed and is continuing to on a daily basis. Some of these changes are due to the following:

THIRD INDUSTRIAL REVOLUTION

With the onset of new technology including digital technology, AI, VR, Social Media and more, thousands of new jobs have been created that did not exist 10 or 20 years ago and old ones that did are disappearing as some services become automated.

LONGER LIFE SPANS

An ageing population means a greater need for health and social care, meaning more workers are needed. Not only this, but more research is needed to tackle disease in order to improve quality of life for those who live longer.

CLIMATE CHANGE

In order to save energy, develop greener technologies and take care of our rapidly declining environment, new jobs are appearing all the time in fields such as Engineering, Agriculture, Energy and Chemical Processing.

WELLBEING

Good physical and mental health is increasingly becoming a priority for the population - this means greater need for services such as gyms, health spas, sport and leisure facilities which have created a wealth of new jobs in these areas.



Not only this, but the way we work is also changing! Increasingly, people are working flexibly or have more than one job or even earn money through the 'gig' economy!

THE LOCAL PICTURE

KEY FACTS ABOUT BUCKINGHAMSHIRE

- ▶ 78% of our jobs are in the private sector
- ▶ 36% of jobs in Buckinghamshire are with small employers
- ▶ Home to 3 world class clusters of business activity - High Performance Engineering, Space and Creative
- ▶ 2nd highest level of self-employment including freelancers within the creative sector
- ▶ Larger than national average Wholesale and Digital Sectors
- ▶ Buckinghamshire residents are much more likely to work in managerial roles than the national average
- ▶ 1 in 6 residents are self-employed.

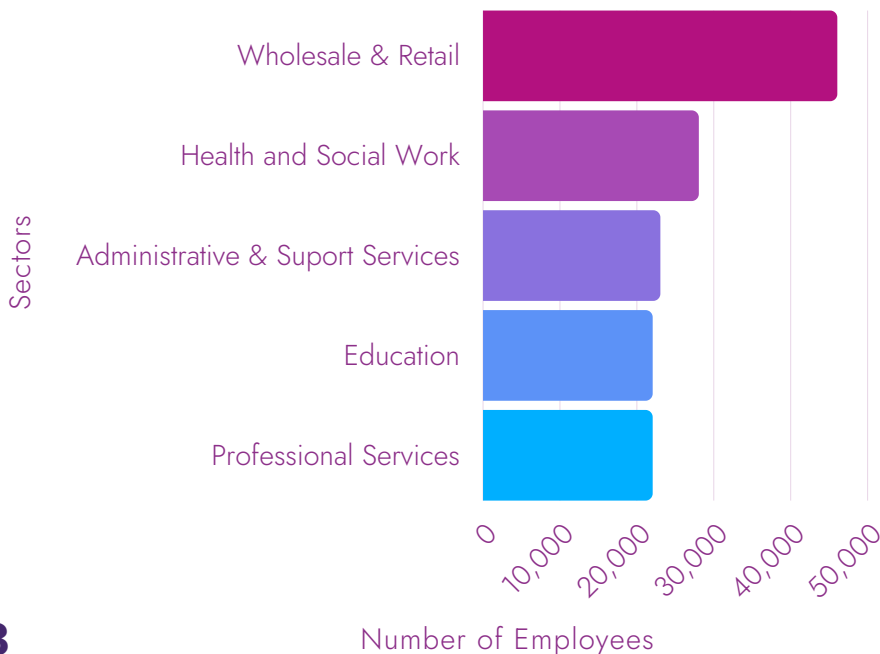


★ Key Employment Areas



WHY WORK IN BUCKINGHAMSHIRE?

Buckinghamshire's 5 biggest employment sectors are:



Largest Self-Employment Occupations in Buckinghamshire





WHAT DOES THIS MEAN FOR YOU?

Information on the Local Labour Market can be very useful if you are considering any career or education choices. Let's look at three examples of how LMI can help you.

If you are 14 and deciding on your GCSE options, you know that choosing a subject like Engineering could be wise as this role falls within a few different growth sectors, meaning there are likely to be many jobs available to you eventually.

If you are looking for a career change and want to retrain, choosing a qualification related to Construction could be wise as it would fall within the Construction growth sector so there is likely many jobs available!

It also can show us what qualifications we need to get into a job role that we are interested in, for example, lawyers typically need to be educated to Level 6 as a minimum before further professional training. Therefore, to become a lawyer, we must at least meet the minimum qualifications requirements to stand a chance at being successful.

EMPLOYERS

The employers below were the top recruiters over the 2020-21 period in Buckinghamshire:



GROWTH SECTORS

↑ CONSTRUCTION

Linked to HS2, East West Rail and Aylesbury Garden Town related construction

↑ HEALTH AND SOCIAL CARE

Linked to the health needs of an ageing population and the aftermath of Covid-19

↑ SPACE

Linked to the anticipation of around 2,000 new jobs at Westcott Space Cluster over the next 10 year

↑ CREATIVE

Linked to expansion plans at Pinewood Studios plus the growth of the West of London Screen Cluster

↑ HIGH PERFORMANCE ENGINEERING

Linked to the expansion of the Silverstone Enterprise Zone.

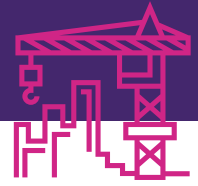
JOBS IN GROWTH

Job Roles that are increasing steadily include Health care roles, Social care roles as well as Software Developers. The top 5 latest jobs in growth in our area are:

- | | | | |
|---|---------------------------------|---|--|
| 1 | Registered General Nurse (RGN) | ↑ | Top job throughout 2020 and into 2021 |
| 2 | Office Administrative Assistant | ↑ | Number 2 throughout 2020 and into 2021 |
| 3 | Lawyer | ↑ | Up ten places from 2020 |
| 4 | Caregiver/ Personal Care Aide | ↑ | Up one place from 2020 |
| 5 | Project Manager | ↑ | Up one place from 2020 |

CONSTRUCTION

CREATING THE FUTURE OF OUR COMMUNITY



SECTOR OVERVIEW

Construction is all around us – from homes and bridges, to infrastructure and urban planning. Every job fits together like pieces of a puzzle to create the built environment. Whether that's plumbers, roofers, electricians, bricklayers, engineers, architects, town planners or surveyors, this sector covers plenty of exciting roles.

In Buckinghamshire alone, around 14,500 people work as employees of the Construction sector, however a further 9,000 work in the sector on a self-employed basis. Over the last 7 years, the Construction workforce in Buckinghamshire has experienced a massive growth of 30%! Moving forward, HS2, the high speed railway line, is expected to create another 4,000 local jobs too. A further 4,500 current employees are involved in the construction of new residential buildings across the county creating many more affordable homes for Buckinghamshire residents.

JOB ROLES

These particular job roles are growing in demand within this sector:



▶ Mechanical Design Engineer	£22k - £41k
▶ General Labourer	£17k - £29k
▶ CNC Machinist	£18k - £33k
▶ Production Manager	£26k - £50k
▶ Automation Technician	£25k - £50k
▶ Project Engineer.	£24k - £48k

KEY EMPLOYERS



KEY SKILLS

These particular Key Skills are highly sought after within this sector:

- ▶ Construction and Trade specific skills
- ▶ Green Construction Technique skills
- ▶ New Technology skills such as AI, VR etc
- ▶ Willingness to Learn.

Buckinghamshire College Group and Uxbridge College also offer other Construction based courses from Level 1 onwards. Milton Keynes College offers a wide range of Construction-related courses from T Levels to trades.

- Buckinghamshire UTC also specialises in Construction and Digital Qualifications.

HEALTH AND LIFE SCIENCES



IMPROVING LONGEVITY AND KEEPING OUR COMMUNITY HEALTHY

SECTOR OVERVIEW

Within the county's largest sector, roles range from Registered General Nurses, to Engineers who design new healthcare digital technologies, through to Social Workers who work with vulnerable children as well as Biopharma Technicians who are involved in creating new drugs; the list of job roles within this sector is wide and far reaching! Health and Social Care professional roles in general hold the number four spot on occupations with highest forecast growth from 2017-2027 in the Buckinghamshire Region - this is largely due to an ageing population but also as a result of the recent Covid-19 pandemic which has seen a surge in applicants who want to study Health and Social Care related qualifications.

Buckinghamshire is also part of a world leading 'Golden Triangle' of UK Health and Life Sciences activity and this triangle covers Oxford, Cambridge and London too. Comprising over 700 business that are supported by key research institutions, this sector is leading the way on innovation as well as providing services we depend so greatly on, such as our NHS.

Stoke Mandeville Hospital is home to the UK's National Spinal Centre as well as a major housing growth area where innovation can provide 'living lab' opportunities to apply the application of new social technologies.

JOB ROLES

These particular job roles are growing in demand within this sector:

	£
Registered General Nurse	£21k - £36k
Nursing Assistant	£15k - £23k
Bioinformation Specialists	£30k - £78k
Paramedics	£21k - £39k
Medical Radiographers	£22k - £40k
Bioscientists and Biochemists.	£21k - £44k

KEY EMPLOYERS



KEY SKILLS

These particular Key Skills are growing in demand within this sector:

- ▶ Mental and Behavioural Health Specialties
- ▶ Medical Support
- ▶ Patient Care.

In Buckinghamshire, Undergraduate Health and Medical courses are provided by: The University of Buckingham, Bucks New University and The University of Bedfordshire. There are also T Levels and Level 1-5 courses in Health and Life Science related qualifications available at local colleges such as Milton Keynes College and Berkshire College of Agriculture.



KEY SECTOR

HIGH PERFORMANCE ENGINEERING

INNOVATION, RIGHT ON OUR DOORSTEP



SECTOR OVERVIEW

High Performance Engineering is the application of engineering sciences to industries where accuracy, performance, reliability and safety are critical. A few examples of where High Performance Engineering is vital are; Aerospace, Automotive and Marine Engineering, Military Equipment and Systems , Motorsports, Power Plant Engineering and Biomedical Engineering.

This sector currently employs around 8,000 people within around 1,700 employers throughout Buckinghamshire. Being a growth sector means this figure is only due to increase over the next ten years! Buckinghamshire's speciality within these numbers focuses on Medtech as well as Formula 1 motorsport - largely based out of Silverstone Park as a part of the Silverstone Technology Cluster. Home to a local and highly regarded specialism, Sports Engineering is a key part of sector growth.

In addition to this, Westcott Innovation Centre recently opened its doors to a fully flexible engineering facility, giving businesses the opportunity to use specialist equipment for light mechanical engineering and rapid prototyping activities.



JOB ROLES

These particular job roles are growing in demand within this sector:

	£
Product Developer	£24k - £42k
Human Factors Engineer	£28k - £62k
Programme Manager	£25k - £102k
Software Engineer	£25k - £61k
Geotechnical Engineer	£18k - £60k
Mechanical Engineer	£22k - £55k
Technician.	£16k - £36k

KEY EMPLOYERS



KEY SKILLS

These particular Key Skills are growing in demand within this sector:

- ▶ Digital Based Skills
- ▶ Drafting and Engineering Design
- ▶ New Technology Based Skills (AI, IoT, 3D Printing, Big Data etc.).

Milton Keynes College and Uxbridge College offer a range of Post 16- to Level 5 Engineering based courses. Bucks New University also offers Engineering based Undergraduate and Postgraduate Degrees.

DIGITAL TECHNOLOGY

CREATING 21ST CENTURY TECH FOR ALL



SECTOR OVERVIEW

Digital Technology is everywhere – from Artificial Intelligence to Computing and Communications. Growth in this sector is huge nationally, but on a local scale as well. Buckinghamshire is home to over 3,000 Digital Technology businesses who employ more than 11,000 people.

In terms of specific roles, 57% of those who work in the Digital Sector locally are in occupations such as; Programmers, IT Business Analysts, System Architects and IT Specialists. Within Buckinghamshire, other key roles from this sector comprise of Professional Services related jobs as well as Engineering based ones.

High Wycombe is home to a developed Software and Digital Consultancy cluster which contributes to a higher concentration of employees within the county than its national counterpart.

Careers within this sector are varied and we are very fortunate to be the home of many new and established Digital Technology brands. This sector is currently facing a skills shortage within Buckinghamshire - see the right hand side of this page for the skills that are in demand!

JOB ROLES

These particular job roles are growing in demand within this sector:

Job Role	Salary Range (£)
Computer Programmer	£22k - £41k
IT Business Analyst	£17k - £29k
Systems Architect	£18k - £33k
Systems Designer	£26k - £50k
IT Specialist	£25k - £50k
Business Developer.	£24k - £48k

KEY EMPLOYERS



KEY SKILLS

These particular Key Skills are growing in demand within this sector:

- ▶ Software and Application skills
- ▶ Data Analysis
- ▶ AI and Machine Learning skills
- ▶ Database and Network skills
- ▶ App Development
- ▶ Programming and Coding skills
- ▶ PPC and SEO skills
- ▶ Tech specific programmes such as Javascript, SQL, Java C++ and Python.

Bucks New University hosts a number of Undergraduate courses fit for an excellent foundation in a budding career within Digital Technology. Some on offer are; Business Management and IT, Digital and Tech Solutions, Cyber Security, Web Development and more!



SECTOR OVERVIEW

The career opportunities within the Space Sector are vast and seemingly endless (much like Space itself!) - with new technologies emerging frequently meaning that this is a huge growth sector both nationally but in particular within the Golden Triangle (Oxfordshire, Buckinghamshire and Cambridge).

Within Buckinghamshire we estimate that the Space Sector will create over 2,000 jobs over the next 10 years, many of which are expected to be at the higher technical level. This is due to the expansion of the Westcott Venture Park - a nationally recognised facility for testing high-tech space propulsion systems. The Venture Park is part of the world-class Westcott Space Cluster which houses a growing number of space-related companies who are fast developing emerging technologies in fields such as rocket propulsion, 5G communications and autonomous systems.

The Business Incubation Centre at Westcott also encourages the development of new companies in these areas, offering them the opportunity to hire specialist equipment for light mechanical engineering and rapid prototyping within their flexible facility.

In 2016, a Nammo Westcott engine was the specific one used to provide the insertion burn to allow NASA's JUNO spacecraft to successfully enter orbit around Jupiter!



WWW.SPACECAREERS.UK

JOB ROLES



These particular job roles are growing in demand within this sector:

	£
Software Developer	£22k - £49k
Propulsion Engineer	£27k - £38k
Chemical Engineer	£24k - £61k
Materials Scientist	£26k - £47k
Electrical Engineer	£21k - £49k
Aeronautical Engineer.	£25k - £54k

KEY EMPLOYERS



KEY SKILLS

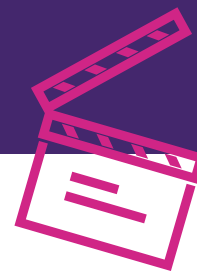
These particular Key Skills are growing in demand within this sector:

- ▶ 5G related skills
- ▶ Knowledge and skills related to Drone capabilities
- ▶ Engineering, Design, Marketing and Management skills
- ▶ Propulsion Test Specialists.

Milton Keynes College offers Science, Design and Engineering based courses, including a specialist aeronautical engineering course. Uxbridge College also offers Mechanical and Electrical Engineering.

CREATIVE

IMAGINATION, REIMAGINED



SECTOR OVERVIEW

Careers in the Creative Sector are highly sought after and come in a variety of different roles.

Tripling over the last decade, there are currently around 4,600 Creative Industries-related companies in Buckinghamshire with around 15,000 employees. A great many more workers are also employed on a freelance basis.

Within this sector, and in Buckinghamshire in particular, Virtual and Augmented Reality are key growth areas and job roles such as those on the right hand side, are in demand locally.

We are home to a great number of Creative employers such as Pinewood Studios who have huge expansion plans over the coming years.

There is a significant and growing demand for creative talent to produce film and stream content in the West of London Screen Cluster area (Apple TV, Pinewood, Leavesden, Elstree, Shepperton, Reading, Long Cross, Bovingdon). With the likes of Netflix, Disney, Universal, Warner Bros and Sky investing heavily in the area - this means that creative roles are in demand!

In order to gain a role within the Creative Sector, the majority of jobs require Level 3 qualifications and higher, combined with the right attitude and experience - time spent in industry is also of high value!

JOB ROLES

These particular job roles are growing in demand within this sector:

	£
▶ Production Co-ordinator	£19k - £45k
▶ Camera/Sound Operator	£20k - £36k
▶ Visual Effects Supervisor	£35k - £98k
▶ Location Manager	£14k - £88k
▶ Editor	£22k - £57k
▶ Production Accountancy.	£27k - £67k

KEY EMPLOYERS



KEY SKILLS

These particular Key Skills are growing in demand within this sector:

- ▶ Production skills
- ▶ Camera Operative skills
- ▶ Creativity
- ▶ Critical Thinking skills.

Within Buckinghamshire there is an array of training providers and Level 1 - 7 courses to get into a Creative role, including:

The National Film and TV School
 Bucks New University
 Buckinghamshire College Group
 Pinewood dedicated Training Providers
 University of Buckingham



MANUFACTURING

TRANSFORMING ONE THING INTO ANOTHER - A PRODUCT FOR USE



SECTOR OVERVIEW

Our daily lives are aided by products that have been manufactured. The role of the Manufacturing Sector is to take raw materials and convert them into finished products - whether that be through the use of labour, tools, chemicals, machines or biological processes. Buckinghamshire is home to around 1,500 manufacturing firms who employ in the range of 18,500 workers! As an area, Buckinghamshire is well known for its top tier manufacturing capabilities in areas such as; Aviation, Motorsport and Aerodynamics, Additive Manufacturing and 3D Printing, Lightweight Composites and Carbon Fibre.

In particular, Formula 1 and other motorsport businesses in the Silverstone Technology Cluster are highly reliant on state-of-the-art technologies, cutting edge design and manufacturing, particularly that which comes from local innovation.

Buckinghamshire is more specialised in 5 sub-sectors of manufacturing compared with national competition. These are; the manufacture of basic Pharma products, manufacture of computer, electronic and optical products, treatment and disposal on non-hazardous waste, manufacture of other transport equipment and civil engineering.

The Manufacturing sector also had a 9% employee growth increase from the year 2010 to 2018 in Buckinghamshire alone. Due to the Westcott Space Cluster's forecasted growth, another 2,300 highly skilled jobs are expected over the next ten years as well!

JOB ROLES

These particular job roles are growing in demand within this sector:

	£
▶ Mechanical Design Engineer	£22k - £41k
▶ General Labourer	£17k - £29k
▶ CNC Machinist	£18k - £33k
▶ Production Manager	£26k - £50k
▶ Automation Technician	£25k - £50k
▶ Project Engineer.	£24k - £48k

KEY EMPLOYERS



KEY SKILLS

These particular Key Skills are growing in demand within this sector:

- ▶ Attention to detail
- ▶ Teamwork
- ▶ Digital Skills
- ▶ Big Data Analytics.

In Buckinghamshire, Science, Design and Engineering-based courses are on offer at all local colleges. Bucks New University also offers Undergraduate courses in Engineering Design, Building and Construction Engineering and Product Design.



WWW.NATIONALCAREERS.SERVICE.GOV.UK/JOB-CATEGORIES/MANUFACTURING





FINANCIAL AND PROFESSIONAL SERVICES

BUILDING LASTING ENDURANCE FOR LOCAL BUSINESS



SECTOR OVERVIEW

The Financial and Professional Services Sector is a large industry within Buckinghamshire that employ around 22,000 people, mainly in the professional services area. Covering all things business, including: Legal, Advertising, Marketing and many more careers that aid in business development and longevity.

In Buckinghamshire alone, there are around 7,000 Financial and Professional Services firms with many workers also choosing to be self employed. Within Buckinghamshire's top 10 occupational specialisms sits three areas that fall under this sector; Sales and Marketing, Design and IT and Telecomms Professionals - this shows how varied and wide ranging the roles within this sector can truly be!

JOB ROLES

These particular job roles are growing in demand within this sector:



- Human Resources Officer £22k - £35k
- Insurance Account Manager £20k - £75k
- Office Manager £22k - £45k
- Chartered Accountant £30k - £50k
- Financial Director. £50k - £80k

KEY EMPLOYERS



KEY SKILLS

These particular Key Skills are growing in demand within this sector:

- Analytical Skills
- Organisation
- Negotiation Skills
- Presentation Skills.

Bucks New University offers Undergraduate Courses in Business and Finance, Accounting and Banking and Finance.

Buckinghamshire College Group also offers Level 2 - 4 Accountancy courses for school leavers.



WHOLESALE AND RETAIL

PROVIDING LOCAL CONSUMERS WITH PRODUCT



SECTOR OVERVIEW

The Wholesale and Retail sector represents the steps in the distribution of goods to merchandise between producers and consumers of those goods. It is the 11th fastest growing sector in the UK over the last 5 years and between 2010 and 2016 there has been a huge 25% growth in the number of Buckinghamshire employees within this sector.

Buckinghamshire's Retail sector provides 22,000 jobs and its Wholesale sector provides 17,000 from a combined number of 4,500 businesses - that is twice as many employees within the wholesale sector compared with the national figures!

Locally, there are a number of wholesale specialisms including; pharmaceutical goods, machinery and equipment as well as computers and software. With such a grand selection of employment prospects, it's no wonder that there are many education opportunities available within the county that range from Diplomas in Fashion Retail to courses focused around Business studies- both fantastic routes to take for a career within the Wholesale and Retail sector!

JOB ROLES

These particular job roles are growing in demand within this sector:

	£
Visual Merchandiser	£12k - £55k
Retail Manager	£20k - £70k
Buyer	£22k - £50k
Sales Assistant	£11k - £25k
User Experience Researcher	£20k - £30k
Business Development Exec.	£19k - £35k

KEY EMPLOYERS



KEY SKILLS

These particular Key Skills are growing in demand within this sector:

- Leadership
- Commercial Awareness
- Problem Solving
- Customer Service.

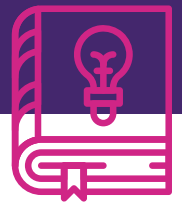
Buckinghamshire College Group offer a Level 3 Extended Diploma in Fashion Retail and Communication as well as an Entry Level 3 Certificate in Skills in Retail. Other local colleges offer Level 2 - 3 courses in Business.





EDUCATION

INSPIRATION AT ITS FINEST



SECTOR OVERVIEW

The Education Sector covers not only Primary schools, Secondary schools, Colleges and Universities, but also Driving schools, Nurseries, Cultural education and a whole host of education-related occupations and business.

Working in Education requires passion, resilience and a love for inspiring others - something the 21,500 people that are currently employed in Buckinghamshire's Education sector know all about! These employees derive from around 800 education establishments and businesses with 10,000 people alone employed in just Primary Education. This figure consists of Teachers, Teaching Assistants, Support Workers, Education Therapists and more!

This sector is the third largest broad employment sector within Buckinghamshire.

It's no wonder that there are a number of education pathways into careers within the Education Sector. These comprise qualifications such as Level 3 awards in Education and Training right through to Undergraduate degrees in Early Childhood Education. Buckinghamshire also boasts an offer of new T Levels in Education and Childcare from both Milton Keynes College and Buckinghamshire College Group!

JOB ROLES

These particular job roles are growing in demand within this sector:

▶ Adult Tutor	£19k - £27k
▶ Learning Mentor	£14k - £27k
▶ Higher Education Lecturer	£33k - £55k
▶ Nursery Worker	£14k - £24k
▶ Secondary Teacher	£23k - £67k
▶ Headteacher.	£44k - £115k

KEY EMPLOYERS



KEY SKILLS

These particular Key Skills are growing in demand within this sector:

- ▶ Creativity
- ▶ Problem Solving
- ▶ Planning and Organisation
- ▶ Team-work.

Uxbridge College offers Level 1 - 3 courses in Childcare, Early Years Practice and Health and Social Care alongside Buckinghamshire College Group, Milton Keynes College, and Bucks New University who all offer a number of Education-related courses.



HOSPITALITY, LEISURE AND TOURISM

GIVING US OUR SENSE OF 'NORMAL' BACK



SECTOR OVERVIEW

The local and national population is increasingly prioritising R&R - which this sector thrives off - whether that's an overnight stay in a hotel, a day out at a theme park, a family visit to the zoo or a romantic week away. The Hospitality, Leisure and Tourism Sector offers it all meaning that the variety of jobs available is vast.

In the period of 2016-2018, visitor spend in this area totalled a grand £929 million alone. Cliveden, the county's top attraction had almost 500,000 visits in 2018 meaning jobs within this sector were abundant.

Around 17,000 people work for Buckinghamshire's core 1,600 Hospitality, Leisure and Tourism businesses and when looking at the 2016 - 2018 period again, these employees ensured that the visiting 2.3 million overnight guests and 18.3 million day trippers within Buckinghamshire were well taken care of!



JOB ROLES

These particular job roles are growing in demand within this sector:

	£
▶ Hotel Receptionist	£12k - £25k
▶ Events Manager	£18k - £75k
▶ Chef	£14k - £50k
▶ Barista	£12k - £22k
▶ Restaurant Manager.	£18k - £45k

KEY EMPLOYERS



KEY SKILLS

These particular Key Skills are growing in demand within this sector:

- ▶ Customer Service
- ▶ Problem Solving
- ▶ Team work
- ▶ Communication

Buckinghamshire College Group offers a variety of courses for roles in this sector, from Entry Level 3 Certificates in Hospitality Services to a Level 3 Diploma in Professional Cookery.

Bucks New University also offers a range of Undergraduate Degrees such as; International Tourism Management; Airline and Airport Management; Events, Festival and Venue Management and more.



PUBLIC SECTOR

FOR THE COMMUNITY, FROM THE COMMUNITY



SECTOR OVERVIEW

Buckinghamshire Council is the Public Sector's biggest employer within Buckinghamshire. It is made up of a wide variety of jobs roles responsible for the administration of public activities such as education, welfare, healthcare, public order and safety activities as well as a great deal more! Careers within the Public Services sector rely on dedicated individuals that put the needs of the community at the forefront of their roles. This includes roles such as Police Officers, Fire Service workers, Town Planners and others we have come to greatly rely on to keep order and safety within our community.

There are over 3,500 workers employed in general public administration roles within Buckinghamshire and a further 1,000 employed in public order and safety roles. Currently, around 300 of those are employed within the Bucks Fire and Rescue Service.

Both Thames Valley Police and Bucks Fire and Rescue offer apprenticeship schemes for new recruits meaning pathways into public services are more broader than ever!

JOB ROLES

These particular job roles are growing in demand within this sector:



- ▶ Civil Service Administrator £17k - £29k
- ▶ Policy Officer £21k - £41k
- ▶ Environmental Health Officer £29k - £70k
- ▶ Town Planner £21k - £43k
- ▶ Firefighter. £23k - £35k

KEY EMPLOYERS



KEY SKILLS

These particular Key Skills are growing in demand within this sector:

- ▶ Resilience
- ▶ Communication
- ▶ Negotiation and Reasoning skills
- ▶ Collaboration skills.

Milton Keynes College offers public services courses from Levels 2 - 5 and Buckinghamshire College Group offer Levels 2 - 3 in Police, Uniformed and Emergency services.

The University of Buckingham also offer Masters courses in Politics and Diplomatic Studies.



THIRD SECTOR AND VOLUNTARY

AIMING TO MAKE A DIFFERENCE



SECTOR OVERVIEW

The Third and Voluntary Sector includes registered charities, voluntary and community groups as well as non-profit distributing social enterprises. In 2020 alone, the UK third sector contributed £18.2 billion to the UK economy with the South East holding the badge for the highest number of charities across the country.

Working in this sector requires dedication, passion and enthusiasm for making society a better place for all. There are many Third and Voluntary Sector roles that overlap with others however key roles include; Project Management, CSR (Corporate Social Responsibility), Campaigning, Fundraising, Lobbying, Counselling and more!

There are approximately 2,500 registered charities operating in Buckinghamshire. 38% of workers are aged 50 and over but more recently we have seen a 3% increase in younger workers (aged 16-34). Buckinghamshire is home to around 175,000 workers who volunteer on a yearly basis!

JOB ROLES

These particular Job Roles are growing in demand within this sector:

	£
▶ Project Manager	£26k - £61k
▶ Accountant	£18k - £48k
▶ Social Worker	£23k - £38k
▶ Public Relations Officer	£25k - £47k
▶ Social Media Manager.	£18k - £38k

KEY EMPLOYERS



KEY SKILLS

These particular Key Skills are growing in demand within this sector:

- ▶ Grant Writing
- ▶ Volunteer Management
- ▶ Fundraising
- ▶ Communication
- ▶ Diversity and Inclusion.

Studying Business at College or University can be useful for working in the Third and Voluntary Sector, alongside having experience of being a volunteer.



ENTERPRISE ZONES

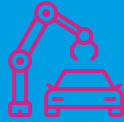


WHAT ARE ENTERPRISE ZONES?

Enterprise Zones are specially designated spaces across England that provide government support to businesses who base themselves within the zones. They offer tax breaks as well supportive places for both new and growing companies, technology and sectors.

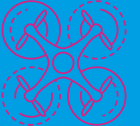
Enterprise Zones help areas to flourish economically as well as influencing the shape of key sectors and creating new and exciting job opportunities locally.

SILVERSTONE PARK



Paving the way for High Performance Technology innovation, Silverstone Park sits next to the Silverstone Grand Prix Circuit amongst the leading motorsport cluster. Home to Formula 1 and with 7 of the 10 Formula 1 teams in close geographic proximity, this zone employs around 40,000 people from 3,500 engineering based companies. From electric cars, 3D printing to sports engineering companies - the opportunities for a career in Silverstone Park are vast.

WESTCOTT VENTURE PARK



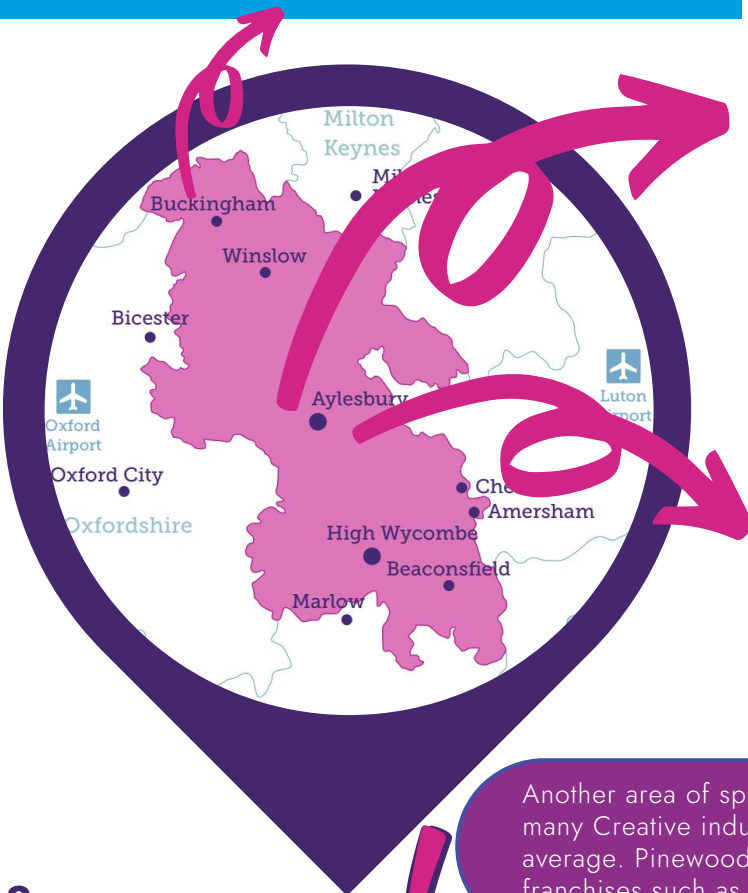
Building on Buckinghamshire's significant and ever-growing strengths in the space sector, Westcott Venture Park is home to a small but growing number of space-related companies which are developing new technologies in rocket propulsion, 5G communications and autonomous systems.

Large developments are planned for Westcott which is likely to create 2,300 highly skilled jobs in manufacturing and a further 1,000 technical apprenticeships over the next 10 years. High-tech research and development in the fields of satellite and future propulsion systems is a specialty at Westcott meaning they are searching for technicians and propulsion test specialists due to a current skills shortage. Studying STEM subjects at school is the best starting point for a career in the space sector, such as at Westcott.

AYLESBURY WOODLANDS



A Unique facility targeted at businesses that are based within the agri-food and human health sectors, Aylesbury Woodlands builds on one of Buckinghamshire's key growth sectors - Health Science. Woodlands comprises extensive green infrastructure to contribute to strategic plans of a healthy living new town within Buckinghamshire. It is set to increase employment by around 2,500 jobs and aims to establish a nationally significant and well connected, Food Science enterprise zone in the UK.



Another area of special interest is Pinewood Studios - there are twice as many Creative industry jobs within Buckinghamshire than the national average. Pinewood is home of the British film industry, in particular franchises such as James Bond and Star Wars and the opportunities are endless!

QUALIFICATIONS AND PATHWAYS

YOU COULD START HERE...

There are many different qualifications you can get that range from Entry Level 1 in courses such as Employability Skills, right up to Level 8 such as a PhD.

As you progress through each level the content gets more advanced and therefore you learn more.

If you are 14-16, typically, you will be studying Level 1 and 2 qualifications.

If you are 16-18, typically, you will be studying Level 2-3 qualifications.

If you are 18+, typically, you will be studying Level 4 - Level 8 qualifications.

This all depends on your own personal learning journey, and which qualification level currently suits your level of learning and whether or not you meet the grade entry requirements.

For example, if you have Special Educational Needs or Disabilities, you may be 16 and studying Entry Level qualifications. Alternatively, you may be 16 and taking an A level already. It's important to note that these levels are a guide to education pathways in England and should be used as so.



AND YOU COULD END HERE...

ENTRY LEVEL

ENTRY LEVEL 1,
ENTRY LEVEL 2,
AND ENTRY LEVEL 3
QUALIFICATIONS

LEVEL
1-2

LEVEL 1: GCSE'S GRADES 3,2,1
LEVEL 2: GCSE'S GRADES 4-9
INTERMEDIATE APPRENTICESHIP
NVQ'S, AWARDS, DIPLOMAS AND
CERTIFICATES

LEVEL
3

A LEVELS
IB DIPLOMA
ADVANCED APPRENTICESHIP
NVQ'S, AWARDS, DIPLOMAS AND
CERTIFICATES

LEVEL
4

HIGHER NATIONAL CERTIFICATE
HIGHER APPRENTICESHIP
NVQ'S, AWARDS, DIPLOMAS AND
CERTIFICATES

LEVEL
5

FOUNDATION DEGREE
HIGHER NATIONAL DIPLOMA
NVQ'S, AWARDS, DIPLOMAS AND
CERTIFICATES

LEVEL
6

DEGREE APPRENTICESHIP
HONOURS DEGREE
GRADUATE CERTIFICATE/DIPLOMA
NVQ'S, AWARDS, DIPLOMAS AND
CERTIFICATES

LEVEL
7+

LEVEL 7: MASTERS DEGREES
POSTGRADUATE CERTIFICATES
NVQ'S, AWARDS, DIPLOMAS AND
CERTIFICATES
LEVEL 8: DOCTORATE

PATHWAYS EXPLAINED

APPRENTICESHIPS

Interested in furthering your skills and knowledge but also wanting hands-on experience? If this sounds like you, perhaps an Apprenticeship is on your radar.

Apprenticeships are fantastic opportunities to learn whilst you earn. Working much like jobs but with the addition of up-skilling yourself, you will get paid a wage to spend the majority of your time in a workplace, with the rest at a training provider such as a College. Apprenticeships are available in 4 different levels; Intermediate, Advanced, Higher and Degree Apprenticeships. Each has its own entry criteria and will allow you to achieve an academic qualification from level 2-6.

For example,
Level 2
Intermediate
Apprenticeship in Retail

FOUNDATION LEARNING

Foundation Learning is a name given to Entry Level 1, 2 and 3 qualifications and is typically aimed at students aged 14 - 19.

These programmes are used to help progress students to level 2 and are usually aimed at those who may have Special Educational Needs and Disabilities or those who require alternative provision. They could include Functional Skills, Employability Programmes, Vocational Subjects, Support for Independent Living and more!

TRAINEESHIPS

Traineeships are a branch of Foundation Learning and are for those who need to gain experience in the workplace. They are aimed at young people aged 16-24 and are unpaid work experience programmes for those who need extra help before moving onto employment or an apprenticeship. Young people who undertake traineeships may have been unsuccessful in finding an apprenticeship or have not done as well as they hoped on their GCSE exams or simply are education below level 3 and want more work experience.

For example
Childcare and
Education T Level

A LEVELS

A Levels are equivalent to Level 3 and take place from a Sixth Form following year 11. They focus on academic subjects - some that you study at GCSE and some that are new. To be able to study A Levels you generally need to have at least five GCSE grades at 4-9* and usually you need at least a 5 or above at GCSE in the subject you wish to take at A Level - however this varies depending on the Sixth Form you are applying too. You would usually study 3 A Level subjects.

T LEVELS

T Levels are new qualifications that are carried out through local further education providers such as Colleges.

You would typically learn skills and theory in the classroom and then spend a minimum of 45 days on an industry placement where you can put those skills and theory into practice.

T Levels are equivalent to 3 A levels and are an option for Post 16 students and above.

VOCATIONAL

Vocational qualifications can progress from Entry Level 1 right through to Level 8. They are designed to help learn skills and theory in a practical way about a specific job area. These qualifications are offered in both Schools and Colleges and can be any of the following; NVQs, BTECs, T Levels, Apprenticeships, TechBacs and Cambridge Technicals.

For example,
BTEC Diploma in
Forensic and Criminal
Investigation

SKILLS FOR EMPLOYMENT



Whether you are looking to up-skill or re-skill, there are a number of ways you can increase your chances of career success. There are 3 categories that skills can be broken down into:

Skills used to process information such as:

- Creativity
 - Critical Thinking
 - Collaboration
 - Listening
 - Complex Problem Solving
 - Active Learning
- and more!

Learning Skills

Skills used to perform specific, usually practical and job specific tasks such as:

- Big Data Analysis
 - Programming
 - Budget Planning
 - MS Office
 - Systems Analysis
- and more!

Technical Skills

Skills that are learnt and used in life and can make you more successful at work:

- Adaptability and Resilience
 - Leadership and Social Influence
 - Communication
 - Emotional Intelligence
 - Initiative
- and more!

Life Skills

By improving, gaining or learning about new skills, you are making yourself more employable - particularly if you can give examples of how you meet each skill you have!

FOLLOW US

 @BucksSkillsHub

 @BucksSkillsHub

 www.buckskillshub.org

 @buckskillshub

 Buckinghamshire Skills Hub

 @buckskillshub



Buckinghamshire
LOCAL ENTERPRISE
PARTNERSHIP
THE ENTREPRENEURIAL HEART OF BRITAIN



**YOUR LOCAL
GROWTH HUB**

**THE CAREERS &
ENTERPRISE
COMPANY**



HM Government